

AI Ready City Distributed Platform and Its Validation in Social Distribution

メタデータ	言語: English 出版者: 武蔵野大学アジアAI研究所 公開日: 2023-03-31 キーワード (Ja): キーワード (En): 作成者: Sornlertlamvanich, Virach, Charoenporn, Thatsanee メールアドレス: 所属:
URL	https://mu.repo.nii.ac.jp/records/2057

[論文]

AI Ready City Distributed Platform and Its Validation in Social Distribution

Virach Sornlertlamvanich
Thatsanee Charoenporn

1. Introduction

The integration of AI and machine learning into smart cities has the potential to revolutionize the way cities are managed and optimized. By leveraging the power of AI and machine learning, cities can make better use of the vast amounts of data generated by connected devices in the IoT. One area where AI and machine learning can have a significant impact is in improving the efficiency of city infrastructure. For example, traffic management systems can use real-time data from connected vehicles and other devices to optimize traffic flow and reduce congestion. Energy management systems can use machine learning algorithms to optimize the performance of power grids, reducing waste and lowering energy costs. Moreover, AI and machine learning can also be used to improve the quality of life for residents. For instance, public safety can be enhanced by using machine learning algorithms to predict and prevent crimes in high-risk areas. AI can also be used to optimize public transportation systems, providing more efficient and reliable services to residents. In addition to improving efficiency and quality of life, AI and machine learning can also be used to address sustainability challenges facing cities. By analyzing data from various sources, including weather patterns, energy consumption, and waste production, cities can identify opportunities to reduce their environmental footprint and improve their sustainability. The integration of AI and machine learning into smart cities has the potential to transform the way we live, work, and interact with our environment. It is an exciting area of research and development that holds great promise for the future of cities.

Thammasat AI City initiative is a determined program that aims to establish a resilient AI platform at the Rangsit campus of Thammasat University. The initiative focuses on four key domains, including elderly and healthcare, mobility, agriculture, and the environment and it is designed to identify the opportunities and challenges of AI disruption and to create a role model for the full activation of data and physical availability. The Rangsit campus location is an ideal setting for the project as it allows for testing AI solutions in a real-world scenario and involving multiple

stakeholders. The initiative aligns with the societal changes and technology trends that have emerged in the wake of the COVID-19 pandemic, namely distributed city, human traceability, new reality, home-office integration, contactless technology, digital lending, and frugal innovation. The goal of the initiative is to create a model for a smart city that is efficient, sustainable, and responsive to the needs of its citizens.

The challenges of urbanization are complex and interconnected, and require a multi-faceted approach that involves government, private sector, and civil society to address them effectively. Similar to many cities in Thailand, Pathum Thani Province, a city near Bangkok, where covers an area of 1,526 square kilometers is urbanizing and facing a rising population situation. The city has a population of 985,643 according to a 2020 report of the National Statistical Office of Thailand. It serves as an important hub for higher education, hosting ten renowned universities, Thailand Science Park and seven mega economic areas which includes shopping malls and agricultural markets. And 35.11 percent of the total land area are the agriculture area. This increase in population is accompanied by a number of urbanization problems, such as insufficient elderly care facilities, environmental deterioration, and traffic congestion. These issues can have a negative impact on the overall quality of life for the inhabitants of the province. With the reference of the Pathum Thani Plan 2018 – 2022 of The Pathum Thani Provincial Office (2018) [1], Pathum Thani Urbanization can lead to increased problems and challenges including traffic congestion and road safety problems, environmental problems, economic and tourism problems and lifestyle problems. To address their challenges, it is important for the local government and community to work together to develop sustainable solutions that balance the needs of the growing population with the preservation of the environment and quality of life for residents. This may include efforts to improve public transportation, promote sustainable development, and increase access to healthcare and other services. Additionally, encouraging the creating an efficient solid waste management system, developing of the capabilities of the target industries, social development and basic security of the people can help to mitigate the negative impacts of urbanization on the environment and economy.

2. AI Ready City Initiatives

The Thammasat University's AI Ready City Networking in RUN project is an initiative to model AI capacity on a city scale within the Rangsit campus, located in Pathum Thani province, which is 2.8112 square kilometers in size. The project aims to address the current limitations of AI research caused by the insufficiency and diversity of data. Reliable and connected data will be collected and made available to demonstrate

AI's capabilities in real-life applications fully. The project functions as a based-platform [2] for four high-impact domains in Rangsit city, including healthcare, environment, mobility, and agriculture. The project is equipped with various AI-enabled devices namely healthcare monitoring devices [3], noninvasive bed sensors [4], environmental sensors, video analytics cameras, street lights, indoor tracking devices [5], and drones for aerial photography. Figure 1. below depicts the project's architecture and its domain-specific connectivity.

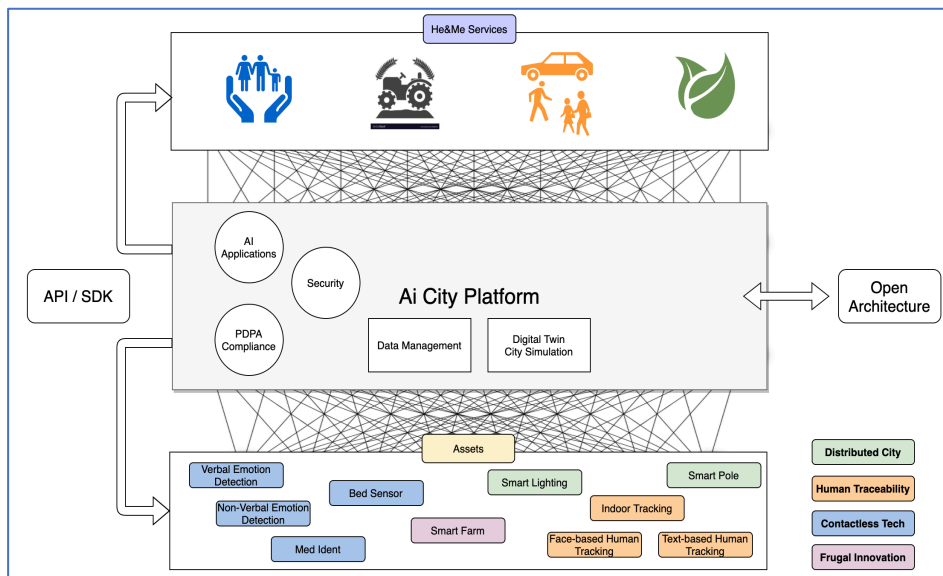


Figure 1. AI Ready City architecture and domain specific connectivity

In order to make the data from several sources available for modeling, the data is stored and sent to the cloud services using low energy mesh network (6LoWPAN protocol in case of smart lighting, Bluetooth low energy (BLE) in case of indoor positioning and bed sensor, etc.). To reduce the high bandwidth consumption devices such as video streaming of surveillance cameras, LAN connectivity, and several techniques¹ (steady state at rest, motion detection, etc.) are introduced. In addition, bed sensors for elderly care systems, the detection of types of on-bed position is localized not only to realize the real-time warning but also to conserve the bandwidth by sending the compressed results to the cloud.

The AI City Project is a comprehensive approach to integrate AI into city operations and infrastructure through four main layers: the accumulation layer, the knowledge layer, the understanding layer, and the decision-making layer, as illustrated in Figure

¹ <https://info.verkada.com/surveillance-features/bandwidth/>

2. Data from IoT devices is analyzed and connected to produce models and prediction results in four targeted domains. The primary layer is the layer of accumulating physical raw data through various sensor network devices as the foundation for the subsequent layers. The next layer is data extraction into knowledge and once the knowledge has been created with new coming data, we can make good understanding and provide good decision at the final layer by the advance of deep learning, neural network and machine learning. Model training for specific tasks is conducted in the understanding layer. The appropriate machine learning paradigms are introduced and evaluated to produce the results in the decision-making layer. The connectivity and selection of the data from various sources are crucial to implementing in the city-scale AI platform development. The platform composes of health & aging platform, environment platform, mobility platform and economy platform [6].

A) Smart health and aging platform

As Thailand becomes a completely aging society, the project aims to address the growing burden of caring for the elderly. It seeks to improve the quality of life and access to health services for communities near Thammasat University, focusing on 5 areas: social, activity, health, medicine, and sleep condition. The project involves the development of a technology-based health platform for the aging population, consisting of 5 main components. Those are the sleep quality analysis system, the medicine identification system, the indoor positioning & services system, the daily health monitoring system, and the elderly follow-up and care robotic system

B) Smart mobility

Focusing in the Thammasat University, Rangsit Campus and Pathum Thani Province, this platform aims to enhance mobility, reduce air pollution, improve safety and boost tourism by analyzing travel patterns and providing in-depth insights. The platform consists of the intelligent traffic data acquisition, the car sharing service system, the crime reporting and monitoring system.

C) Smart Environment Platform

The Smart Environment Platform is aimed at addressing environmental issues and fulfilling the goal of smart city development. The platform leverages IoT technologies and AI systems to monitor the urban environment. The essential systems according to the concept of urban environment monitoring include the air pollution levels monitoring system, the weather forecasting system, and the vehicle front camera-based inspection system for suspicious objects.

D) Smart economy

The Thammasat University Rangsit Campus and Pathum Thani Province are home to various educational and research organizations, including AIT and NSTDA, that conduct research

in various fields. However, there is a lack of promotion and connection between these organizations and the private sector. Thus, a Smart Economy Platform is being developed to connect these organizations and bring research results to real-life applications. This will involve collaboration between research universities and researchers to improve innovation and foster cross-disciplinary and geographic cooperation. The platform leverages big data and Deep Learning to analyze and process information, and aims to drive collaboration between public and private sectors, improve the value and productivity of the agricultural sector, develop targeted industries and services, and support local entrepreneurship by integrating research with real-world problems.

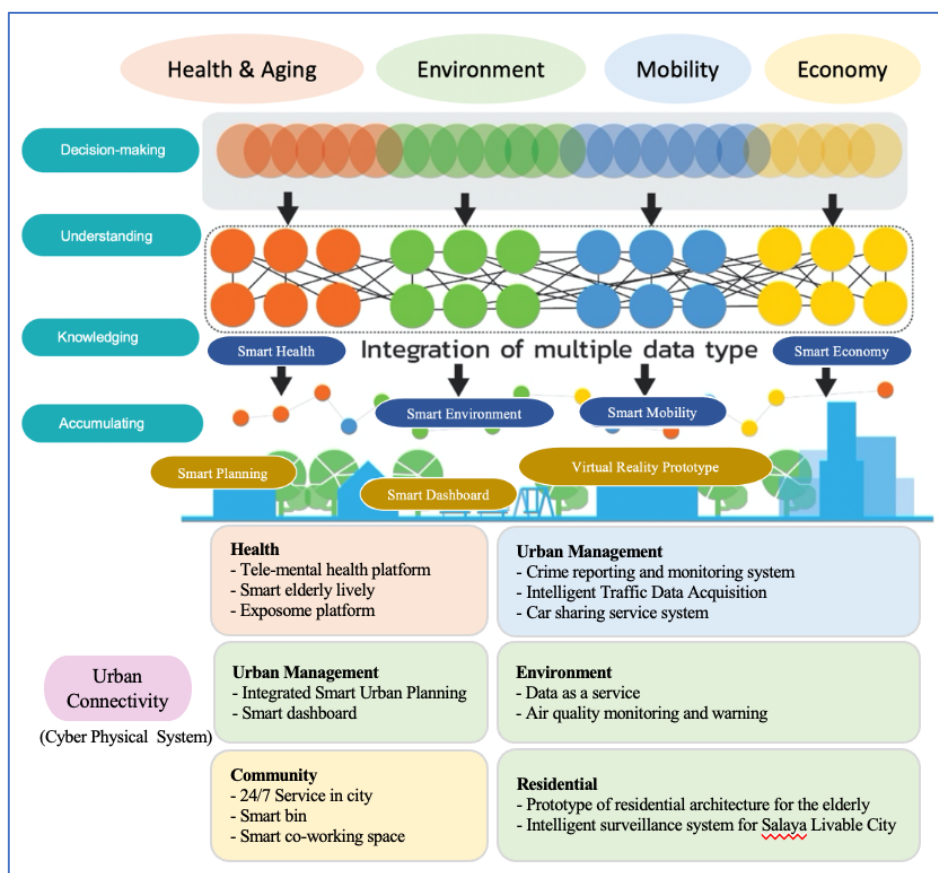


Figure 2. Deep intelligent IoT in fully connected network

3. AI Ready City Domain Specific Connectivity

Regarding to the domain specific connectivity, there are four types of technology that we focus on, namely distributed city, human traceability, contactless technology and frugal innovation. In this paper, we will mainly focus on the distributed city and the contactless technology.

As countries around the world try to admit that the Covid-19 has evolved a strain

to survive, to be able to spread easily and quickly until eventually many countries have to accept that COVID 19 is an endemic disease. From trying to block the border to minimize the spread. As well as efforts to eradicate this disease within a limited time at the cost of enormous social and economic losses. Finally, we have to adapt and learn to live safely with COVID-19 and have as much balance in life as possible. From the concept of new normal that our way of living moved to relied on the online communities, it was currently changed to the next normal. Although epidemic prevention measures are sparse, the lives of people have changed a lot from the original.

Covid-19 changes our behaviors and attitudes in life, especially the exposure to technology including the online platforms which meets the needs of convenience, safety, and hygiene. These behaviors are leading to the next normal way of living which impact to the economy and environment in the future. People are aware of safety, stability, and more flexibility in living and of a greater understanding that health is fundamental to life. The stay-at-home economy, touchless society, physical distancing, and elevating health and wellness concern are concrete examples of the next normal.

Although the situation has improved. But there is still no vaccine that is 100 percent effective in preventing infection. This allowed people to maintain their distance and avoid entering the areas where people are crowded. However, job duties or social contact is sometimes difficult to avoid being in the public areas. Contactless or touchless society then shifted into account. The focus is on adopting technology and practices that allow social and economic activities to continue while minimizing the risk of disease transmission through physical contact. This can include contactless payment systems, virtual meetings, facial recognition technology, and the use of robots for tasks that would normally require human contact. The goal is to reduce the spread of disease while maintaining as much normalcy and efficiency as possible in daily life.

The contactless approach to internet of thing and wearable medical technology emphasizes the need for comfort and ease of use, while also respecting privacy and avoiding interference with daily activities. Following the contactless approach, we aim to create systems that can provide medical monitoring and care without the need for invasive or uncomfortable devices, through the use of contactless technology such as sensors and platforms. These systems include health monitoring, elderly care, and medicine identification, which are designed to provide medical personnel with the information they need to ensure the well-being of their patients.

Indoor Camera-Based System for Human Physical Distance Tracking

The proposed method for determining physical distance in indoor environments introduces the use of end-to-end cameras to track a person's position, movement direction, and seat activity. The system does not identify individuals, but instead records their location for the purpose of monitoring physical distancing. The research mainly focuses on two main aspects: detecting a person's location and detecting seat positions [7].

A) Seat Detection

The seat detection in the proposed system uses contour color extraction [8] on the top part of the seat or table. It extracts unique contour shape as a feature, as shown in Figure 1. The results indicate that contour detection works well for the first rows of seats, but may have difficulties detecting seats in the rest of the rows.

The perspective transformation [9], [10] has been applied to changes the original image projection into a new visual plane for system requirements.

For improving the seat detection ability, we apply the perspective transformation with the selection of the top seat area in the room as the region of interest (ROI), before seat contour detection. The process allows the system to accurately detect the seats in the room.

B) Person Detection

The proposed system detects a person in the specified area using YOLOv3 algorithm, which uses trained weights and data sets to detect objects. The pre-trained model and function selected specifically for human body detection were utilized in the algorithm, as illustrated in Figure 2. In the standard pre-trained YOLOv3 [11], [12], the bottom center of the detection box is used as the reference point for a person's location. The proposed system improves person location reference point by first calculating the height-to-width ratio of the detected human object and rounding it, which better appropriate for the indoor environment being monitored. The ratio is denoted as $Q_{Box} = h_{Box}/w_{Box}$. Where h_{Box} and w_{Box} represent the height and the width of the box, respectively.

The classification of standing and sitting is based on the ratio of Q_{Box} , which is calculated as the height of the box (h_{Box}) divided by its width (w_{Box}) ($Q_{Box} = h_{Box}/w_{Box}$). And it can be concluded that

- if the value of $Q_{Box} \geq$ (greater than or equal) 1.6, refers to a standing person in the box
- if the value of $Q_{Box} <$ 1.6, refers to a sitting person in the box

$$c = \begin{cases} 0.775; & \text{if } Q_{\text{Box}} \geq 1.6 \\ 0.675; & \text{otherwise} \end{cases} \quad (1)$$

The distinction between standing and sitting scenarios is illustrated in Figure 3. (b) and 3. (c) compared to Figure 3. (a) which shows the conventional algorithm for determining the reference location of a person. Here, the location of the person in each frame is identified using a modified algorithm. The conventional point at the bottom-middle of the detected human body has been replaced with a reference point c , which can take the values 0.775 or 0.675 for a standing or sitting person, respectively. The reference points for standing and sitting cases are calculated using Equation (1) and this approach was used to improve the accuracy of location of persons in a room environment.

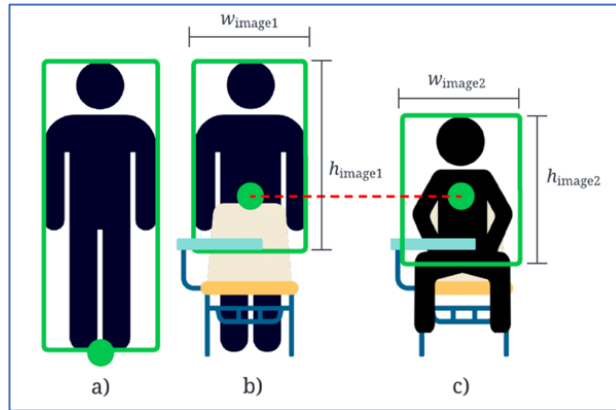


Figure 3. Illustration of human body detection reference point (green)

(a) original approach (at the bottom-middle point of the green box)

(b) a person standing between seats

(77.5% of vertical proportion from the top-middle point as $h_{\text{image1}} / w_{\text{image1}} \geq 1.6$)

(c) a person sitting on the seat

(67.5% of vertical proportion from the top-middle point as $h_{\text{image2}} / w_{\text{image2}} < 1.6$).

C) Physical Coordinate Calculation

The reference point coordinates for seats and persons were determined and used to calculate physical coordinates by converting the image coordinates to physical

coordinates using two reference parameters from the room's physical dimensions, including the real size of the room and the pixel size of the region of interest in the image frame. The ratio between image and room size was calculated by dividing image size by room size.

D) Performance Evaluation and Discussion

The proposed system uses seat contour detection to initiate seat positioning in a room. Nonetheless, the accuracy of the detection decreases in the back rows according to constraints from further seats. To improve the detection ability for the back row seats, a perspective transformation is proposed. This transformation increases the ability of the seat detection algorithm to detect seats in the back rows.

For physical distancing monitoring, the system uses the upper left-hand corner of the seat boundary area after the perspective transformation as the reference point. This point is used to transform the image space into a bird-eye view, allowing for calculation of physical locations of seats and people [13]. While the system can estimate actual distances in real-world units, there may still be errors from the transformation, which have been studied in various related researches [14], [15], [16]. To improve the accuracy of image-based distance measurement, we need to select the proper area of interest and algorithm to calibrate the image-physical distance.

A camera-based system was implemented to determine the physical locations of seats and people in a room. The average error of seat location determined by the system was ± 5.25 cm. with a standard deviation of 4.64 cm. The small error suggests the overall performance of the system in determining real-world locations. The system can accurately determine whether people are at an appropriate physical distance (180 cm.) apart from others for COVID-19 prevention, and the uncertainty of 5.25 ± 4.64 cm. has a small effect on the scale of distancing. The system is reliable in providing proper physical distancing suggestions.

To classify whether a person is sitting or standing, we used the height-to-width ratio of the area surrounding a detected person as the criteria. Based on this classification, an appropriate reference point was determined to represent the spatial location of the person in the room space. The maximum boundary for a person sitting on a seat was found to be 46x87 cm., which is reasonable according to seat dimensions. The system is able to accurately determine whether a seat is occupied or available. This method solved the problem of the hidden part of the human body behind the seat, allowing for more precise location identification. The improvement of the body reference point shows the potential for developing a more precise location identification system in the future. Figure 4. illustrates the system workflow of the

camera-based indoor physical distancing log recording system.

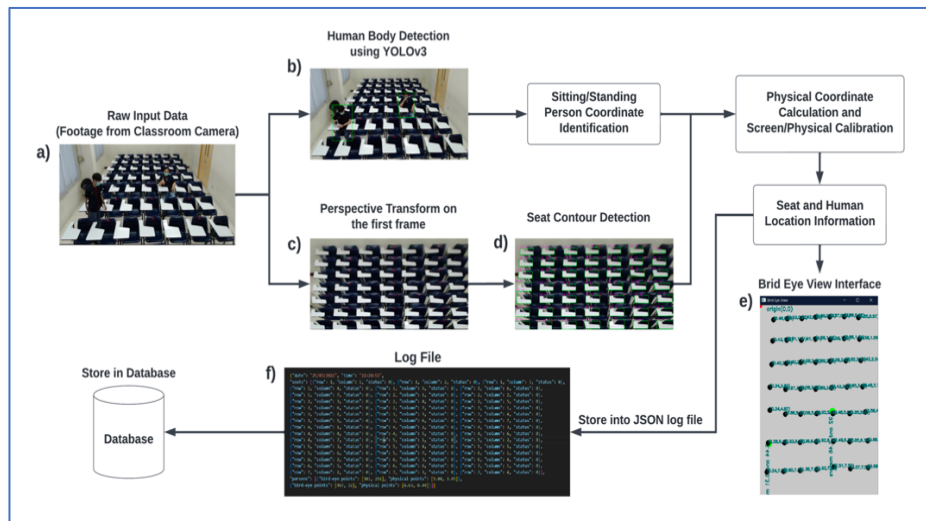


Figure 5. The system workflow for camera-based indoor physical distancing log recording system.

Smart Street Light Monitoring and Visualization Platform

Smart lighting is a concept that utilizes artificial intelligence (AI) and the Internet of Things (IoT) technology to manage and control lighting systems in cities. The implementation of smart lighting has become a popular trend in modern cities as it enables efficient and effective management of lighting equipment, reduces energy consumption and costs, and enhances the overall safety and security of the city. Smart lighting has been implemented in many major cities worldwide as an important solution for smart city management. The ability to monitor and control lighting equipment in real-time, collect and analyze data from devices and sensors, and the ease of use of the platform make it a convenient solution for managing and improving the lighting systems in cities.

The Smart Lighting project at Thammasat University, Rangsit Campus, is an example of the implementation of this concept. The project involves the development of a web application on a cloud platform that serves as a central control system for monitoring, controlling, and collecting data from lighting equipment and sensors in the university campus in real-time. The platform provides a user-friendly interface for monitoring and controlling the lighting equipment, and it also visualizes the data collected from the devices and sensors in the area, making it easier for users to analyze and understand the information, and for the efficient maintenance by campus staff as well.

The platform, moreover, this platform aims to improve energy efficiency and align with Thammasat University's sustainable development goals through monitoring and data analysis for optimal energy consumption [17].

For the first phase, the 167 smart light poles, equipped with LED lamps and adjustable dimming levels were installed. The pole-to-pole separation of approximately 20 meters ensures optimal coverage with the general regulation of street light in Thailand and provides a more efficient and effective lighting solution.

A) Smart street light installation

In collaboration with the Minebea Mitsumi Inc., of Japan, smart street lights and environmental sensors are installed in six zones on five roads within the Rangsit campus. The project equipment consists of 167 controllable lighting devices with brightness sensors attached to each lighting device, environment station including weather condition and light sensors, three gateways for connecting all equipment to an external control system.

The smart LED lights and their associated illuminance sensor are connected to the control node and CMS Neptune SC-v6.0.3 platform operated by the manufacturer (Paradox Engineering, Switzerland). The API can be accessed via REST (the Representational State Transfer) over HTTP (Hypertext Transfer Protocol) to collect data and control the local device. The backend of the system must be able to send HTTP requests and receive responses from the CMS API. The front-end visualization is presented as a web application, which also connected to the lighting system via the CMS API, accessible from any devices with a web browser, and can display received data and device status. Advantageously, the web application can be accessed from anywhere at any time.

B) The development of back-end and front-end system

To develop the web application, it is necessary to establish both the back-end or the server-side and the front-end or the client side of the application. Node.js, a JavaScript runtime environment, is used in web application development as it allows JavaScript to run on both ends. [18]. On top of node.js, the Express.js web framework module is introduced because of its highly configurable nature, thus allowing for more customization on the web application development [19].

Express.js provides a robust and convenient routing system that allows developers to create custom API endpoints to handle HTTP requests and send responses. The Axios module [20] makes it easy to send HTTP requests and receive responses, which is useful when connecting to third-party APIs like the CMS API. For security, it's common to implement authentication and authorization mechanisms to protect the API and its

resources. The use of cookies to store user tokens can help to improve the performance of the authentication process by reducing the number of requests to the CMS server. By using these technologies, developers can create a back-end application that integrates with the CMS API and provides a secure and efficient way for users to access and control devices through the CMS. The back-end application communicates with the CMS API to retrieve data from lighting devices and environmental sensors. It processes and reformats the data received from the API and sends it as an HTTP response in JSON format to the front-end application, making it easier to display and use. The API also provides additional information, such as device information and status, to support the monitoring system on the front-end.

The front-end web application is designed to be user-friendly and accessible via the internet or cellular network using HTTP protocol. To ensure that the web application behaves the same across all devices, including mobile and desktop devices, responsive web application design with Bootstrap is implemented. This allows for fast and optimized rendering of web pages on devices with different screen sizes, improving the user experience on mobile devices.

Chart.js, an open source JavaScript library [21], is used for data visualization on the dashboard. The library provides a wide range of customization options and is used in the web application to display data from environmental sensors including temperature and humidity from the past 2 hours, in the form of line graphs. The numerical data of illuminance, Ultra Violet A and B indices, wind velocity, wind direction, and air pressure are updated every 10 minutes. The dashboard interface is displayed in Figure 6.

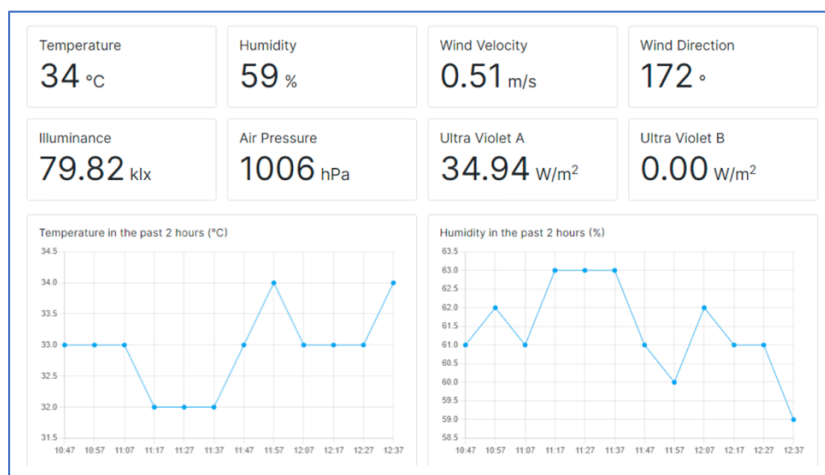


Figure 6. The dashboard interface used in the web application:

Finally, the device location is displayed on an interactive map using Leaflet.js [22]. The interactive map provides real-time information on the device information and precise location. The web application, a combination of front-end and back-end development, is deployed on Microsoft Azure App Service [23], which supports Node.js applications and has a streamlined deployment process. After deployment, a public URL is available for accessing the web application to monitor the smart lighting system and retrieve data from environmental sensors.

4. Conclusion

The Thammasat AI City platform aims to enhance city management by incorporating cross-domain data connectivity and machine learning to support comprehensive data collection. According to the collaboration between two universities – Musashino University and Thammasat University – that allows our professors, researchers, and students to work together on this research and development project. This type of collaboration can provide a range of benefits, including access to a broader pool of knowledge, skills, and expertise, as well as the ability to tackle more complex problems that require a multidisciplinary approach. The work that focused on applying classroom knowledge to real-world problems is a great way to ensure that the skills and knowledge gained in the classroom are put to practical use. This approach can help to create a more engaged and motivated group of learners who are better equipped to tackle the challenges of the real world. Finally, the opportunity to study cross-cultural solutions and models is also highly valuable. As the world becomes more interconnected, it is essential to develop solutions that can be applied in different cultural contexts. This requires an understanding of the nuances and differences that exist between cultures, as well as the ability to develop solutions that are both effective and culturally sensitive. The collaboration between MU and TU sounds like an excellent opportunity for all involved to gain valuable experience and make a positive impact in the world.

Acknowledgement

This work was supported by the Thailand Science Research and Innovation Fundamental Fund, Contract Number TUFF19/2564 and TUFF24/2565, for the project of “AI Ready City Networking in RUN”, based on the RUN Digital Cluster collaboration scheme.

References

- [1] Klaylee J, Iamtrakul P, Kesorn P. Driving Factors of Smart City Development in Thailand. In: Proceedings of International Conference and Utility Exhibition on Energy, Environment and Climate Change (ICUE); 2020, p. 1–9. doi: 10.1109/ICUE49301.2020.9307052
- [2] Ota N. Create Deep Intelligence TM in the Internet of Things; 2014. URL <http://on-demand.gputechconf.com/gtc/2015/presentation/S5813-Nobuyuki-Ota.pdf>
- [3] Singh KK, Singh A, Lin J-W, Elnger A. Deep Learning and IoT in Healthcare Systems. Paradigms and Applications: CRC Press; 2021 Dec.
- [4] Viriyavit W, Sornlertlamvanich V. Bed Position Classification by a Neural Network and Bayesian Network Using Noninvasive Sensors for Fall Prevention. *Journal of Sensors: Hindawi*. 2020 Jan; Volume 2020, Article ID 5689860. p. 1–14. <https://doi.org/10.1155/2020/5689860>
- [5] Kovavisaruch L, Sanpechuda T, Chinda K, Kamolvej P, Sornlertlamvanich V. Museum Layout Evaluation based on Visitor Statistical History. *Asian Journal of Applied Sciences*. 2017 Jun;5(3). p. 615–622.
- [6] Virach Sornlertlamvanich, Pawinee Iamtrakul, Teerayuth Horanont, Narit Hnoohom, Konlakorn Wongpatikaseree, Sumeth Yuenyong, Jantima Angkapanichkit, Suthasinee Piyapasuntra, Prittipoen Lopkerd, Santirak Prasertsuk, Chawee Busayarat, I-soon Raungratanaamporn, Somrudee Deepaisarn, and Thatsanee Charoenporn. Data Analytics and Aggregation Platform for Comprehensive City-Scale AI Modeling, Proceedings of the 32nd International Conference on Information Modelling and Knowledge Bases (EJC2022), Hamburg, Germany, May 30 - June 3, 2022, pp. 97–112.
- [7] Somrudee Deepaisarn, Angkoon Angkooksawaengsuk, Charn Arunkit, Chayud Srisumarnk, Krongkan Nimmanwatthana, Nanmanas Linphrachaya, Nattapol Chiewnawintawat, Rinrada Tanthanathewin, Sivakorn Seinglek, Suphachok Buaruk, and Virach Sornlertlamvanich, "Camera-Based Log System for Human Physical Distance Tracking in Classroom," Proceedings of 2022 APSIPA Annual Summit and Conference, Chiang Mai, Thailand, November 7–10, 2022.
- [8] S.-W.Hong and L.Choi, "Automatic recognition of flowers through color and edge based contour detection," in *2012 3rd International conference on image processing theory, tools and applications (IPTA)*, pp. 141–146, IEEE, 2012.
- [9] N. I. Hassan, N. M. Tahir, F. H. K. Zaman, and H. Hashim, "People detection system using yolov3 algorithm," in *2020 10th IEEE international conference on control system, computing and engineering (ICCSCE)*, pp. 131–136, IEEE, 2020.
- [10] I. Ansari, Y. Lee, Y. Jeong, and J. Shim, "Recognition of car manufacturers using faster r-cnn and perspective transformation," *Journal of Korea Multimedia Society*,

vol. 21, no. 8, pp. 888–896, 2018.

[11] N. I. Hassan, N. M. Tahir, F. H. K. Zaman, and H. Hashim, “People detection system using yolov3 algorithm,” in *2020 10th IEEE international conference on control system, computing and engineering (ICCSCE)*, pp. 131–136, IEEE, 2020.

[12] P. Gupta, V. Sharma, and S. Varma, “People detection and counting using yolov3 and ssd models,” *Materials Today: Proceedings*, 2021.

[13] J. C. Marutotamtama and I. Setyawan, “Physical distancing detection using yolo v3 and bird’s eye view transform,” in *2021 2nd International Conference on Innovative and Creative Information Technology (ICITech)*, pp. 50–56, IEEE, 2021.

[14] S.-F. Lin, J.-Y. Chen, and H.-X. Chao, “Estimation of number of people in crowded scenes using perspective transformation,” *IEEE Transactions on Systems, Man, and Cybernetic s-Part A: Systems and Humans*, vol. 31, no. 6, pp. 645–654, 2001.

[15] J. Yu, N. Gao, Z. Meng, and Z. Zhang, “High-accuracy projector calibration method for fringe projection profilometry considering perspective transformation,” *Optics Express*, vol. 29, no. 10, pp. 15053–15066, 2021.

[16] V. Kocur and M. Ftačnik, “Detection of 3d bounding boxes of vehicles using perspective transformation for accurate speed measurement,” *Machine Vision and Applications*, vol. 31, no. 7, pp. 1–15, 2020.

[17] Somrudee Deepaisarn, Paphana Yiwsiw, Chanon Tantivattanapaibul, Suphachok Buaruk, and Virach Sornlertlamvanich, “Smart Street Light Monitoring and Visualization Platform for Campus Management,” 2022 17th International Joint Symposium on Artificial Intelligence and Natural Language Processing (iSAI-NLP), Chiang Mai, Thailand, November 5–7, 2022, pp. 1–5, doi: 10.1109/iSAI-NLP56921.2022.9960257.

[18] N. Chhetri, *A Comparative Analysis of Node.js (Server-Side JavaScript)*. Master’s thesis, St. Cloud State University, 2016.

[19] A. Mardan, “Using express.js to create node.js web apps,” *Practical Node.js*, pp. 51–87, 2018.

[20] “Axios.” Available at <https://axios-http.com/>, 2022.

[21] H. M. Millqvist and N. Bolin, A comparison of performance and scalability of chart generation for Javascript data visualisation libraries: A comparative experiment on Chart.js, ApexCharts, Billboard, and ToastUI. Bachelor’s thesis, University of Skövde, 2022.

[22] V. Agafonkin, “Leaflet—an open-source Javascript library for interactive maps.” <https://leafletjs.com/>, 2022.

[23] V. P. Desai, K. S. Oza, P. P. Shinde, and P. G. Naik, “Microsoft azure: Cloud platform for application service deployment,” *International Journal of Scientific Research in Multidisciplinary Studies*, vol. 7, no. 10, pp. 20–23, 2021.